

WHY 1520

POMPA PER MOTORE IDRAULICO - PUMP FOR HYDRAULIC MOTOR
 POMPE POUR MOTEUR HYDRAULIQUE - BOMBA PARA MOTOR HIDRÁULICO

CARATTERISTICHE - SPECIFICATIONS

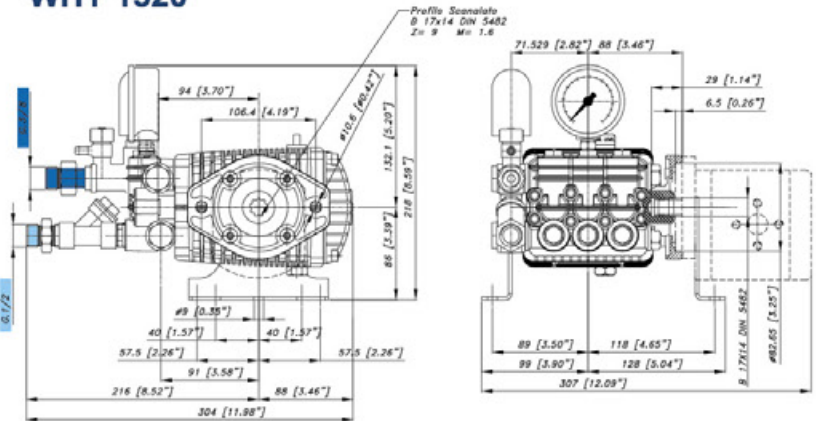
		WHY	
IN	DIAMETER	\varnothing 3/8 BSP (PUMP) - 1/2 BSP (VALVE)	
	PRESS.	Min.	1 bar 15 PSI
		Max.	6 bar 87 PSI
TEMP.	Max.	60° C. 140° F.	
OUT	DIAMETER	\varnothing 3/8 BSP	
SHAFT		\varnothing HOLLOW 14X17 DIN 5482	
OIL	SAE 75W 90	0.5 Litri 0.13 U.S.G.	
PESO WEIGHT	Kg lbs	5.8/12.7 (PUMP) 11.8/26 (MOTOR PUMP)	
PISTONE PLUNG.	DIAMETER	mm 18	
CORSA STROKE	mm	12.4	

KIT ACCESSORI - ACCESSORIES KIT - KIT ACCESSOIRES - KIT ACCESORIOS (OPTIONAL)

02.6198.97.A

Lancia- Pistola- Ugello - Filtro- Tubo di mandata 5/16" - Lance- Gun- Nozzle - Filter- High pressure hose 5/16"
 Lance- Pistolet - Buse - Filtre- Flexible H.P. 5/16" - Lanza- Pistola- Boquilla- Filtro- Manguera de alta presión 5/16"

WHY 1520



02.6195.97.3

POMPA PER MOTORE IDRAULICO

(Manometro e kit piedini inclusi)

PUMP FOR HYDRAULIC MOTOR

(Pressure gauge and mounting rail kit included)

POMPE POUR MOTEUR HYDRAULIQUE

(Equiptement fourni: manomètre et kit supports)

BOMBA PARA MOTOR HIDRÁULICO

(Manómetro y juego de pies incluidos)

02.6196.97.3

POMPA CON MOTORE IDRAULICO

HYDRAULIC MOTOR PUMP

POMPE AVEC MOTEUR HYDRAULIQUE

BOMBA CON MOTOR HIDRÁULICO



CARATTERISTICHE - FEATURES

PERFORMANCE CHART

CODICE PART NR.	MAX		PRESS		RPM 950				RPM 1450				RPM 1725				Oil Pressure (hydraulic motor)	
	L/min	GPM	Bar	PSI	L/min	GPM	KW	HP	L/min	GPM	KW	HP	L/min	GPM	KW	HP	Bar	PSI
WHY 1520			150	2175	8.7	2.3	2.6	3.4	13.0	3.4	3.8	5.1	15.0	4.0	4.4	5.9	50	725
02.6195.97.3	15.0	4.0	180	2610	8.7	2.3	3.1	4.1	12.9	3.4	4.6	6.1	14.9	3.9	5.3	7.1	60	870
02.6196.97.3			200	2900	8.6	2.3	3.4	4.5	12.9	3.4	5.1	6.8	14.9	3.9	5.8	7.8	80	1160
					22	5.8			32	8.4			38	10				

PORTATA OLIO MOTORE IDRAULICO
 HYDRAULIC MOTOR OIL FLOW